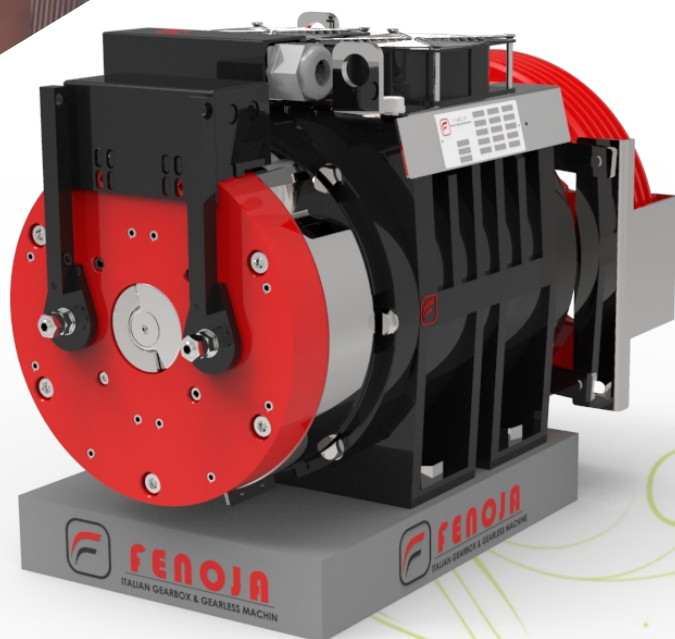




**FENOJA**<sup>®</sup>  
ITALIAN GEARBOX & GEARLESS MACHINE

**New Generation  
Permanent Magnet  
Synchronous Gearless  
Traction m/c.**



**FIL-75M**  
**Gearless Machine**



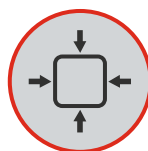
**No Machine Room  
Require**



**Save Energy**



**Low Noise**



**Compact Designs**



**Technology  
Collaboration by Italy**

# FIL-75M

## Gearless Machine

### FIL75M the perfect Gearless for 544 Kg load

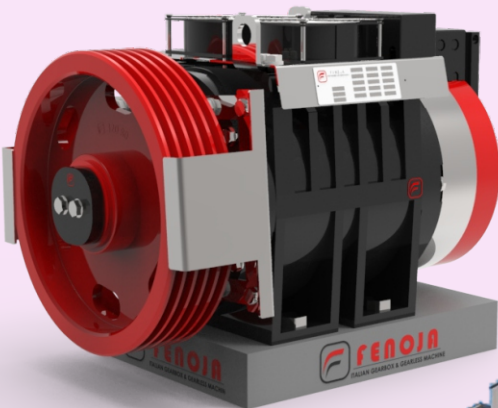
Fenoja FIL75M Gearless Motor is the most trusted and advanced lift system in the indigenous market. When maximizing the needs of installation cost minimization with safety ride & comfort.

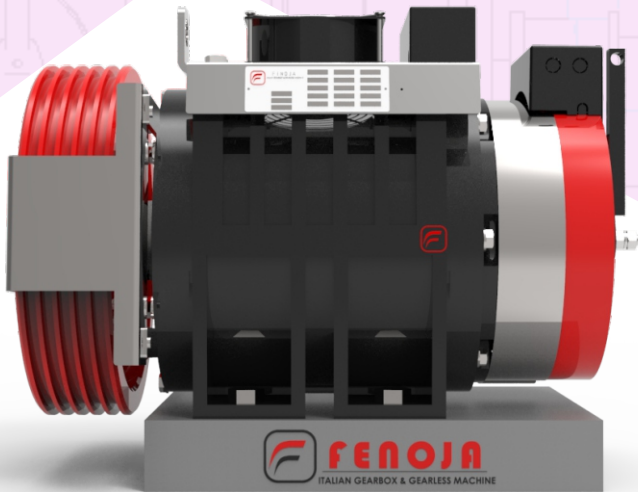
#### Product Description:

1. Crucial Short circuit torque is always higher than the rated one in order to perform emergency operations in safety and security complete in all respects. safety and security.
2. The mechanically redundant brake with double magnetic circuit is certified for excessive incline of speed .
3. The appropriate cooling fans.
4. Cantilevered Traction sheave
5. Mechanism fo Introduced and hand with levers for manual release, power cable already connected and encoder cable. (Special connector on request only).
6. For installations of reporting a static load up to 1.800kg and capacities up to 544 kg max roping 2:1 are satisfied.
- 7 Torque moment: 250 Nm - S5 - 40%ED - 180 avv/h

#### Typical application: Machine Roomles

- 2:1 – 544 kg - 240 mm Traction Pulley





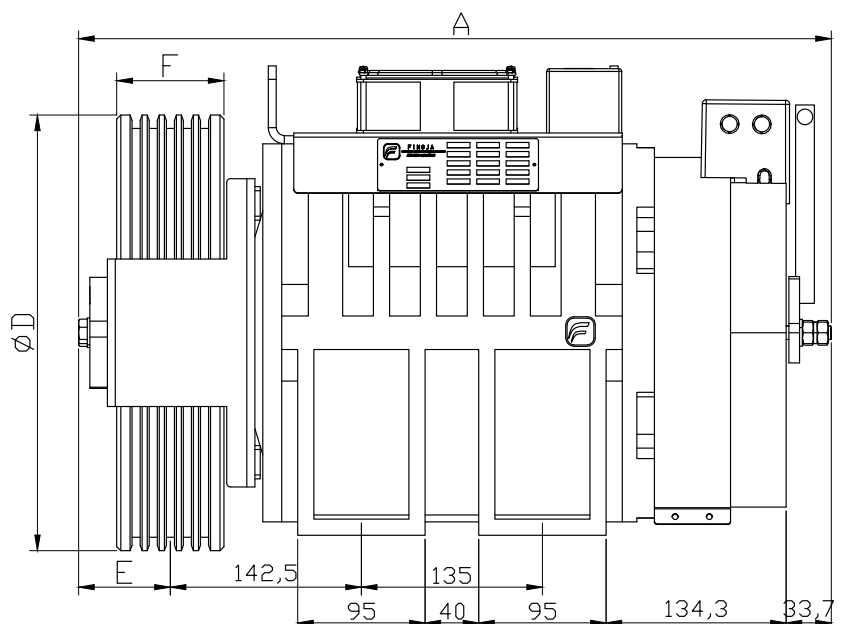
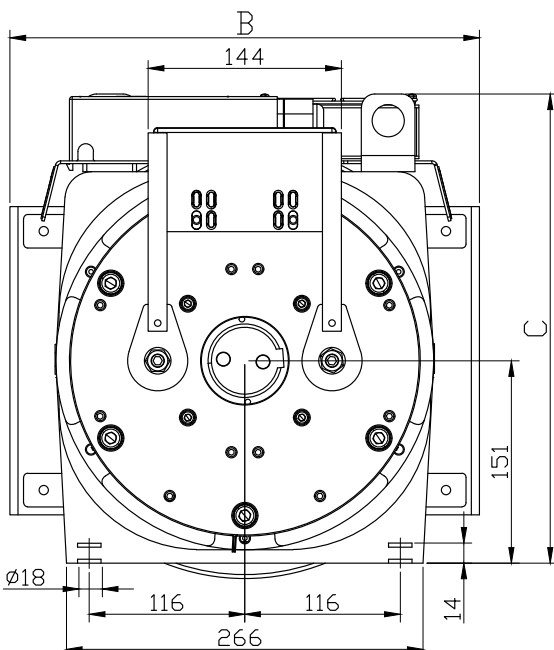
# FIL-75M

## Gearless Machine

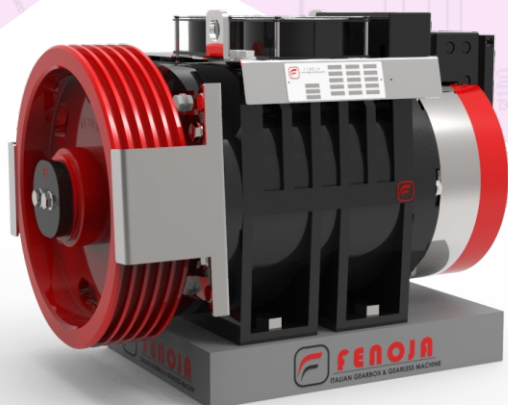
# New Generation Permanent Magnet Synchronous Gearless Traction m/c.



Gear less Type	Traction Sheave (mm)		Dimension(mm)			
FIL75M	øD	F	A	B	C	E
	320	80	530	350	348	60





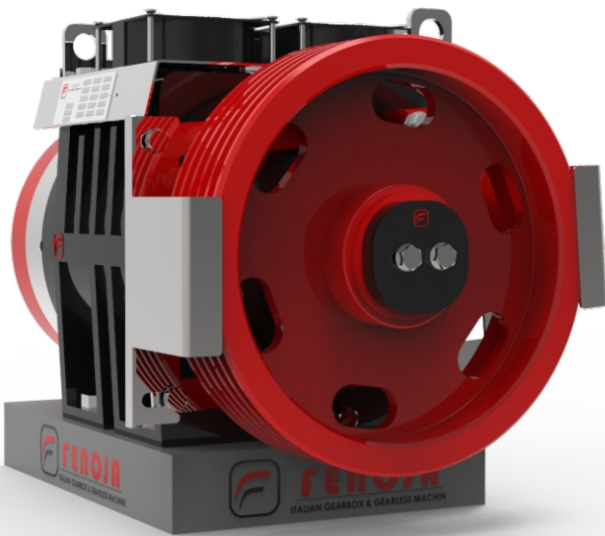


# FIL-75M

## Gearless Machine

	LOAD	SPEED	Ø	ROPES	PITCH	TORQUE	POWER	RPM	Freq	CURRENT 380V
	KG	M/S	MM	MAX	MM	NM	K.W	RPM	Hz	A
02:00	340	0,5	240	6xØ6	12	162	1,3	79,6	10,6	7,1
			320	4xØ8	17	216	1,3	59,7	8,0	7,0
		0,63	240	6xØ6	12	162	1,7	100,3	13,4	7,1
			320	4xØ8	17	216	1,7	75,2	10,0	9,5
		1	240	6xØ6	12	162	2,7	159,2	21,2	9,4
			320	4xØ8	17	216	2,7	119,4	15,9	9,5
		1,5	240	6xØ6	12	162	4,0	238,7	31,8	12,3
			320	4xØ8	17	216	4,0	179,0	23,9	12,5
		1,6	240	6xØ6	12	162	4,3	254,6	34,0	12,3
			320	4xØ8	17	216	4,3	191,0	25,5	12,5
		1,75	240	6xØ6	12	162	4,7	278,5	37,1	12,3
			320	4xØ8	17	216	4,7	208,9	27,9	16,4
		2	240	6xØ6	12	162	5,4	318,3	42,4	14,3
			320	4xØ8	17	216	5,4	238,7	31,8	16,4
		2,5	240	6xØ6	12	162	6,7	397,9	53,1	19,1
			320	4xØ8	17	216	6,7	298,4	39,8	19,1
	408	0,5	240	6xØ6	12	184	1,5	79,6	10,6	8,1
			320	4xØ8	17	245	1,5	59,7	8,0	7,9
		0,63	240	6xØ6	12	184	1,9	100,3	13,4	8,1
			320	4xØ8	17	245	1,9	75,2	10,0	10,8
		1	240	6xØ6	12	184	3,1	159,2	21,2	10,7
			320	4xØ8	17	245	3,1	119,4	15,9	10,8
		1,5	240	6xØ6	12	184	4,6	238,7	31,8	14,0
			320	4xØ8	17	245	4,6	179,0	23,9	14,2
		1,6	240	6xØ6	12	184	4,9	254,6	34,0	14,0
			320	4xØ8	17	245	4,9	191,0	25,5	14,2
		1,75	240	6xØ6	12	184	5,4	278,5	37,1	14,0
			320	4xØ8	17	245	5,4	208,9	27,9	18,6
		2	240	6xØ6	12	184	6,1	318,3	42,4	16,3
			320	4xØ8	17	245	6,1	238,7	31,8	18,6
		2,5	240	6xØ6	12	184	7,7	397,9	53,1	21,7
			320	4xØ8	17	245	7,0	298,4	39,8	21,4
	544	0,5	240	8xØ6	12	235	2,0	79,6	10,6	10,4
		0,63	240	8xØ6	12	235	2,5	100,3	13,4	10,4
		1	240	8xØ6	12	235	3,9	159,2	21,2	13,7
		1,5	240	8xØ6	12	235	5,9	238,7	31,8	17,9
		1,6	240	8xØ6	12	235	6,3	254,6	34,0	17,9
		1,75	240	8xØ6	12	235	6,9	278,5	37,1	17,9
		2	240	8xØ6	12	235	7,8	318,3	42,4	20,9
		2,5	240	8xØ6	12	235	9,8	397,9	53,1	27,8

# New Generation Permanent Magnet Synchronous Gearless Traction m/c.



**India Factory Warehouse :**

📍 Malayapur, Raghunathpur,  
24 PGS North, Baduria - 743401  
West Bengal, India

☎ +91-9735-02-0007  
03217-235003

✉ info@fenoja.com

🌐 www.fenoja.com